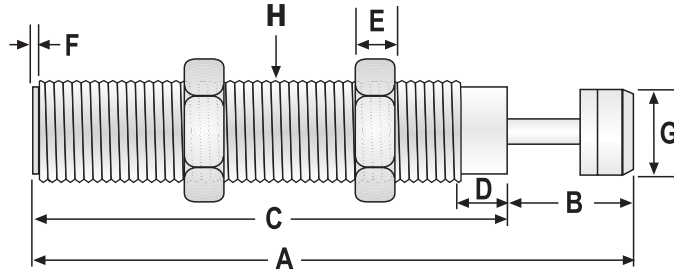


# Self Compensating Minibuffers



## EFM Series

- Operating Temperature: 14° to 176°F (-10° to 80°C)
- Two locknuts provided with each minibuffer
- Flange and Footlug mounts available



### SPECIFICATIONS: EFM MINIBUFFERS

DIMENSIONS IN INCHES (MM)									
MODEL	STROKE	A	B	C	D	E	F	G	H
EFM 08-06-6C, 7C, 8C	.24 (6)	1.97 (50)	.48 (12)	1.50 (38)	-	.12 (3)	.20 (5)	.26 (6.6)	M8 X 1.0
EFM 10-08-6C, 7C, 8C	.31 (8)	2.24 (57)	.55 (14)	1.70 (43)	-	.12 (3)	.20 (5)	.34 (8.6)	M10 X 1.0
EFM 12-10-6C, 7C, 8C	.39 (10)	2.74 (69.5)	.77 (19.5)	1.97 (50)	-	.16 (4)	.22 (5.5)	.41 (10.3)	M12 X 1.0
EFM 10-20-1C, 2C	.80 (20)	4.90 (125)	1.36 (35)	3.54 (90)	.12 (3)	.31 (8)	.43 (11)	.71 (18)	7/8-14 UNF (-1,-2)
EFM 10-20-6C, 7C									M20 X 1.5 (-6,-7)
EFM 11-25-1C, 2C	1.0	5.06	1.71	3.35	.55	.39	.12	.87	1-12 UNF (-1, -2)
EFM 11-25-6C, 7C	(25)	(128)	(43)	(85)	(14)	(10)	(3)	(22)	M25 X 2.0 (-6, -7)
EFM 27-25-7C, 8C	1.0 (25)	5.93 (151)	1.56 (40)	4.4 (111)	-	.25 (6)	.39 (10)	.89 (23)	M27 X 3.0
EFM 11-40-1C	1.6	8.31	3.25	5.06	.55	.39	.12	.87	1-12 UNF (-1)
EFM 11-40-6C	(40)	(211)	(83)	(129)	(14)	(10)	(3)	(22)	M25 X 2.0 (-6)
EFM 20-50-2C	2.0 (50)	9.57 (243)	3.47 (88)	6.10 (155)	.71 (18)	.59 (15)	.55 (14)	1.18 (30)	M36 X 1.5

### SIZE SELECTION

MODEL	EFFECTIVE WEIGHT	ENERGY PER CYCLE	ENERGY PER HOUR	MAX IMPACT SPEED	SPRING FORCE lbs (kgf)		MAX CYCLES PER MINUTE	WEIGHT lbs. (g)
	lbs (kg)	In lbs (Nm)	In lbs (Nm)	In/Sec (m/sec)	Ext.	Comp.		
EFM 08-06-6C	1.1 (0.5)	17.8 (2)	78,200 (8,800)	78 (2)	.4 (.18)	.9 (.41)	70	.02 (11)
EFM 08-06-7C	4.4 (2)	17.8 (2)	78,200 (8,800)	39 (1)	.4 (.18)	.9 (.41)	70	.02 (11)
EFM 08-06-8C	13.2 (6)	17.8 (2)	78,200 (8,800)	20 (0.5)	.4 (.18)	.9 (.41)	70	.02 (11)
EFM 10-08-6C	4.4 (2)	35.6 (4)	135,000 (15,200)	117 (3)	.5 (.23)	1.0 (.45)	63	.04 (20)
EFM 10-08-7C	8.8 (4)	35.6 (4)	135,000 (15,200)	59 (1.5)	.5 (.23)	1.0 (.45)	63	.04 (20)
EFM 10-08-8C	19.8 (9)	35.6 (4)	135,000 (15,200)	31 (0.8)	.5 (.23)	1.0 (.45)	63	.04 (20)
EFM 12-10-6C	11 (5)	44.44 (5)	156,800 (17,640)	117 (3)	.8 (1.8)	3.7 (1.7)	59	.07 (31.5)
EFM 12-10-7C	22 (10)	44.44 (5)	156,800 (17,640)	59 (1.5)	.8 (1.8)	3.7 (1.7)	59	.07 (31.5)
EFM 12-10-8C	66 (30)	44.44 (5)	156,800 (17,640)	31 (0.8)	.8 (1.8)	3.7 (1.7)	59	.07 (31.5)
EFM 10-20-1C	66 (30)	260 (29)	468,000 (52,800)	55 (1.4)	2.0 (0.9)	5.1 (2.3)	30	.4 (181)
EFM 10-20-6C								
EFM 10-20-2C	33 (15)	260 (29)	468,000 (52,800)	79 (2.0)	2.0 (0.9)	5.1 (2.3)	30	.4 (181)
EFM 10-20-7C								
EFM 11-25-1C	242 (110)	712 (80)	640,800 (72,300)	47 (1.2)	4.4 (2.0)	7.1 (3.2)	15	.64 (290)
EFM 11-25-6C								
EFM 11-25-2C	75 (34)	712 (80)	640,800 (72,300)	87 (2.2)	4.4 (2.0)	7.1 (3.2)	15	.64 (290)
EFM 11-25-7C								
EFM 27-25-7C	952 (433)	690 (78)	621,400 (70,200)	79 (2.0)	4.4 (2.0)	7.1 (3.2)	15	.79 (359)
EFM 27-25-8C	3812 (1733)	690 (78)	621,400 (70,200)	47 (1.2)	4.4 (2.0)	7.1 (3.2)	15	.79 (359)
EFM 11-40-1C								
EFM 11-40-6C	662 (300)	1042 (118)	750,240 (84,700)	118 (3.0)	4.4 (2.0)	12.6 (5.7)	12	1.32 (595)
EFM 20-50-2C	2205 (1002)	3472 (392)	1,666,560 (188,100)	118 (3.0)	6.6 (3.0)	18.3 (8.3)	8	2.21 (1000)